



Vanuatu Trip

Delwyn Chambers updated us recently on progress with the Ambae School Project in Vanuatu ...

In July, another team of volunteers will go to work at the school on Ambae, Vanuatu. If you want to know more



check out the website www.asproject.co.nz or google Ambae School Project Vanuatu.

Project leaders have been very pleased to hear that within the last year, the school roll has increased from 9 to 20 pupils. So more desks need to be made, plus painting and other small repairs.

The locals have started the chicken farm micro enterprise project, and it is hoped to start a piggery project while we are there. These projects will generate income for the school.

There will be an opportunity for the locals to attend two seminars. One for pastors and leaders, and another for pre-school teachers.

We are wanting to take up with us - \$2 shop reading glasses, soap, toothpaste, good non-fiction and junior reading books for children, pens, pencils, rubbers, coloured paper, plasticine, art brushes, powdered water paint, and other stationery.

If you would like to do your bit to help out - please phone Delwyn 431 7443.

What Rudy thinks ...

In April we featured sculptor Rudy van der Pol in "Through the Looking Glass". This month we asked Rudy to provide some thoughts on Paparoa itself. He has spent time working with urban designers in other communities, giving him insight into the possibilities of thinking ahead and possibly looking outside the square for some interesting ideas:

"Paparoa is a memorable town. There is something about its position and layout that makes it special. Its proximity to some great northern Kaipara beaches, magnificent bush and an abundance of historical references only add to its allure."

I remember thinking this some years ago when I first drove through it. In fact it was on the basis of my first impressions of Paparoa that I bought a property here. It is small enough to be intimate, yet at the same time it attracts many visitors to it.

There has been so much work done by many people over the years to make Paparoa a memorable place.

One of things that I have pondered on that could extend on this, is to add colour to the two bridges at either end of the town, in order to formalise the entrances to the center of town.

Another idea I have had is to extend the planting theme of poplars/ flaxes on the other side of the river that has been recently fenced off.



When one views the town from the water it is obvious that the areas with mature planting work really well and offer shade.

There is a lot of potential for the river to be used more, particularly now that there is a jetty at The Landing.

I see a bright future for the town especially as

new arrivals come with a new energy and vision to complement and add to the wonderful community efforts that are obvious for all to see. Bring it on."

Rudy van der Pol

Rudy's ideas are his own but give us a stimulus to think differently.

A community constantly evolves with its changing population and its institutions. The landscape evolves too and we can enhance the quality of that change by some careful thought and planning. What is important is that we keep thinking of the possibilities. PP

Job Description : Editor

Looking for new challenge and wanting to put something back into the community? PPI is seeking an editor for Paparoa Press.

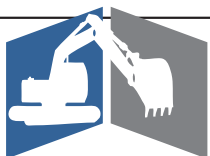
Have you got word processing and desktop publishing experience? Can you work to a monthly deadline? Do you enjoy the challenge of producing quality work for the public? Do you like to see your literary and design skills used to full advantage? Can you work as part of a team dedicated to serving the community?

This job could be right for you. Experience with Adobe InDesign an advantage but full training available. A monthly honorarium is offered plus computer and software.

If you're interested or require more information please contact Graham Taylor 431 7209 PP

INSIDE

- Lions Speech Contest 2
- Rally Round-up..... 3
- Heritage Hotspot 4
- Through the Looking Glass 5
- Out & About..... 6
- Motoring Musings..... 6
- Paparoa Primary School 9
- What's On 11
- Community Directory 11



HUBAND
CONTRACTORS LTD

**ROADING • EARTHWORKS
DRAINAGE • SITEWORKS**

For enquiries, contact Shaun:

Cell: 021 222 0272

Home: 09 431 8339

Email: admin@huband.co.nz

Registered Drainlayers

The Old Post Office Guest House

Bed & Breakfast

YOUR HOSTS: Deb and Kevin
paparoadeb@xtra.co.nz **09 431 6444**
www.oldpostofficeguesthouse.co.nz

• SMALL GROUPS OR LARGE
• MEALS ON REQUEST

For a warm
welcome



Serving the community since 1903



Lions Speech Contest

- DO MANNERS MATTER?

- JUST WHAT IS THE ROLE OF THE SPEAKER OF THE HOUSE?



First in the Junior Section:
Aleesha Butt, Matakohē School

These were two of the topics for speeches this year in the Lions Speech contest, other topics were "CAR RALLIES ON OUR LOCAL ROADS" and "DRUGS IN SPORT, A VIEWPOINT". Nine Juniors (years 5 & 6 students) and six Seniors (years 7 & 8 students) spoke and kept their listeners keenly paying attention: the viewpoints about manners mattering in our world today tell of children appreciating being respectful and caring of people around them; the Speaker of the House was shown to be a powerful and busy person being in charge

of law and order of 120 Members of Parliament when in session – and third in seniority to the Governor General and the Prime Minister in our country!

On the night the judge had to be skillful, a role admirably filled by Mrs Ruth Smellie. Ruth assured participants that she had had a difficult job and congratulated them all for their work in producing and delivering their speeches. She also gave some helpful pointers for their next speech-writing efforts.

First in the Junior section was Aleesha Butt, Matakohē School; second equal were Charlotte Warbrooke, Paparoa, and Amy Lawrence, Maungaturoto Primary; third equal Harmony Day, Tinopai, and Tristine Southern, Matakohē. First in the Senior section was Natalie Birt, Otamatea High School; second Alex Parr, Matakohē; and third Jessie Allan, Otamatea High School.



First in the Senior Section:
Natalie Birt, Otamatea High School



Ed Hinson

Registered Electrician

09 431 6117 Mob 021 1671 843

■ COMMERCIAL ■ DOMESTIC ■
■ INDUSTRIAL ■

PAINTER

For all your painting
requirements

- Interior
- Exterior
- Roofs
- Mould spraying
- Waterblasting

Many local references
No job too small

**For a quality job, phone Dave
09 431 6623 or 027 490 3522**

Paparoa Press PP

PUBLISHED MONTHLY BY
Progressive Paparoa Inc. (PPI),
for Paparoa, Pahi, Matakohē,
Whakapirau and Tinopai.

CIRCULATION 950

CONTACT US

- paparoapress@orcon.net.nz
- ph 09 431 7144 after hours
- PPI, PO Box 107, Paparoa 0543
- www.paparoa.org.nz

ADVERTISING

Rate Card available by email
Publication date 1st of month
Booking & Copy Deadline:
15th of month prior

**Does your
organisation have
something interesting
to tell the community?**

**We'll be happy to place
your news
space permitting**

**contact Paparoa Press
email preferred
paparoapress@orcon.net.nz
09 431 7144 a/h**



Lions Looking for Feedback

Paparoa Lions are participating in a nationwide survey undertaken by Lions to survey their community's needs for the future. President Alistair Banks says it is important to find out the changing needs of communities so programs can be better targeted to meet those needs.

The questionnaire has been sent to some 40 local groups asking them to identify their priorities and ideas for developing Paparoa. Alistair has trained as a facilitator and has been working in areas outside Paparoa. This is because of perceived bias if working in his own area. The survey results will be analysed by an independent co-ordinator before being returned to the local Lions club.



Lions member Barry Baines discussing the Lions Survey with
Paparoa Farmers' Market stallholder Lucille Elmbroch

Lions clubs play a major role in community service in many communities. Receiving feedback from those communities will be very valuable in planning future activities. Not only will the survey allow fine tuning for local needs, it hopefully will result in more members joining Lions.

BATTENSBY Bros. CONTRACTING LTD

- Ground Cultivation • Silage and Hay
- Fertiliser Spreading • Fencing



Glean 021 983 734 Ross 021 983 594

Ph: 09 431 6186 Email: battensbybrothers@xtra.co.nz

RALLY ROUNDUP: ANOTHER NATIONAL / INTERNATIONAL CAR RALLY BITES THE DUST ...

... or rather it was the mud this time! In good rallying conditions, our local roads once more gave lots of enjoyment to the drivers in the International Rally of Whangarei.

Organisers and drivers alike are thankful and appreciative for the support of Kaipara residents.

For all the volunteers who gave up at least one day of the weekend to be part of the big team of marshals - a big thank you from your community - your involvement

has brought in funds from outside our local area while giving pleasure to those who enjoy watching fast cars do amazing moves - not to be replicated, it must be said!

And huge thanks must go to the co-ordinators of each stage who also spent many hours on preparation of the course prior to the rally itself. These people are from these seven groups: Paparoa Lions;

Maungaturoto Country Club; St. John Ambulance; Marohemo Hall; Kaipara Hunt Club; the Mid Western Lions; and Kamo Lions.



The Rally of Whangarei could not be held without this co-operation and the patience of residents along the various roads.

New Zealand champion team, Hayden Paddon and John Kennard, in a Mitsubishi Lancer EVO 9, had a successful rally, winning this the second round of New Zealand Rally Championship. They also won the final power stage at Pohe Island, Whangarei. Local driver, Ben Huband and co-driver Shaun Piper, had a great rally and came 4th in the "Top Half" competition in their Subaru Legacy.

Maungaturoto 150th



The Programme of Events and Registration Form are now available for the weekend's celebrations 1st -3rd November. Go to www.maungaturotomatters.co.nz, phone Albie Paton 4318 148, or email Debbie Holt at tim.debbie@xtra.co.nz.

The very full weekend plans include the opening of the time capsule from 1963; a landing re-enactment with powhiri at the Bickerstaffe Road wharf site; a parade; Old Time sports & entertainment; and Celebration Dinner at the Centennial Hall.

If you have friends or family who could be interested, let them know about this big event in Maungaturoto's history.

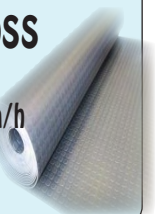
For ongoing information get on the 150 Newsletter mailing list by emailing: albie.marge@xtra.co.nz.

Carpet Layer

20 years experience

phone **Ian Ross**

09 431 6939 a/h
027 4996 413



PLUMBER

Kaiwaka to Ruawai

- 30 years' experience
- All plumbing services including new housing and maintenance



ANDREW KENNY
ph 027 642 8320

BREAM BAY Design & Print LTD

100% Locally
Owned &
Operated
Since 2004

Proud to be a **PartLife** Print Champion

Brought to you by:
PRINTNZ
our industry, our people

Printers & Graphic Designers Your LOCAL one stop shop!

- ♦ Graphic Design, Logo Creation ♦ Brochures, Flyers, Labels
- ♦ Docket books & NCR ♦ Postcards, Envelopes & Booklets
- ♦ Invitations, Photo Books ♦ Digital, Letterpress, Offset
- ♦ Wide Format Posters & Plans

STAND OUT FROM THE CROWD!

FRIGHTENED OF THE COST? DON'T BE

WE WILL WORK WITH **YOUR** BUDGET!
AND WILL GIVE YOU A FREE **NO OBLIGATION** PRICE
BEFORE STARTING ANY WORK!

PRINTNZ member
our industry, our people

www.breambayprint.co.nz
P: 09 439 3100 | 09 432 8998
design@breambayprint.co.nz

Freeview Digital TV Transmission is here



15 TV and
5 Radio/Music
channels are
currently being
transmitted.

Satellite dishes,
decoders, cable
etc., supplied
and installed.

Other channels also available.

ph **Keith the TV Guy**
(09)4317143 or (021)2394251

The Glass Guy



Phone Colin
09 431 6595

Paparoa Press PP CLASSIFIED ADVERTISING

Bee Swarms

if you see any bee swarms
ph Mike 431 6008

*All my life I wanted to
be somebody.*

*Now I see that I should
have been more specific.*

Jane Wagner

Heritage Hotspot Pahi Jail

Pahi Police Station closed in 1910 when the station house (also the home of the police constable) burned down. The station was situated in the area, now part of the Pahi camping ground, that forms a triangle between Pahi Road and Piccadilly Street.

Some time after the fire, the Pahi Jail was shifted to Maungaturoto where it sat for years down in the paddock below the old Maungaturoto Police Station (on the corner just up the hill from Maungaturoto Hotel).

Sold to local identity, Nan Worthington, it was removed and trucked to the grounds of the Museum at Matakohē by Roger Huband, in the late 1980s.

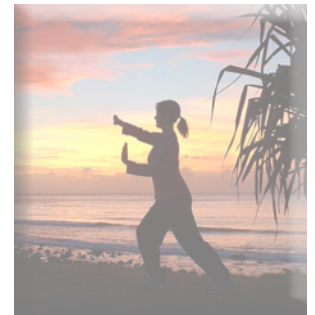


The old Pahi Jail on the move once more, this time just down the road to the Haines property, February 2013

After some years in use as a storage room, the Museum manager's plans for the building upset the owner and the Pahi Jail was on the move once more, this time to Paparoa where Randall and Liz Haines gave it a home, refurbished it and used it as additional accommodation when they owned the Paparoa Post Office B & B. When the business was sold, the Jail stayed on its site until February this year when yet another move saw it established just down the road, in the grounds of Randall and Liz's home, with a fine view over the river. The interior of the old building is still in its original state but a small deck area is in process of being added to the front. When it is finished, guests will again be invited to "spend a night in jail".

Tai Chi on Tuesday?

Following our story on Tai Chi in April, James Lyon, the committee chairman reports that there are 14 stalwart members, some of them long serving, who enjoy the weekly exercise class.



The committee is seeking grants to assist with hall hire and tutor expenses. Like many things these days funding is getting harder but the group is so enthusiastic they are determined to continue.

New members are of course very welcome and the benefits of a regular gentle exercise programme goes without saying. Tai Chi is especially recommended for older folk by many doctors. Why not give it a try on Tuesdays 1pm at Paparoa Hall. Just roll up! PP

Matakohē House



**Licensed Café
and
Bed & Breakfast
Accommodation**

CAFÉ: Open every day for Lunch,
Morning & Afternoon Teas, and Dinners

Check out some Matakohē House specialties:

MUSSELL & KUMARA FRITTERS (to die for)

NACHOS (spicy beef with sour cream)

'A LA CARTE' Dinner Menu

all our food is home cooked

Bookings are absolutely essential for dinners

WE CATER FOR ALL CELEBRATIONS - GIVE US A CALL
Matakohē House, 24 Church Road, Matakohē 09 431 7091

New Printer for PPI

Northland Business Solutions' chief technician, Chris Balani, delivering PPI's brand new Canon 5240 printer to its Paparoa home in Skelton's Drapery. PPI made the decision to replace the old machine as it had required numerous repairs in the last few months and it was becoming more and more difficult to maintain print quality. The old printer had made more than a million copies in its lifetime. Trials on the new machine show an enormous improvement in print quality over the old machine with photo reproduction being especially good. If you have any printing/copying to be done, don't forget to call in and see Robyn and she'll show you what the new printer can do for you. PP



Paparoa Motor Camp



**check out
our
self-contained
cottages**

- Tent and Van sites, Cabins, Kitchen,
- Showers ● Internet available ●
- Public Laundry facilities ● Pump-out Station

Ph 09 431 6515

cnr SH12 and Pahi Road, Paparoa

Through the Looking Glass : Terry Hanna

When you spot the dying privet on the side of SH 12 between Ford Road and Maungaturoto Railway settlement, you will know that Terry Hanna's commitment to kill the noxious plant in this area (as part of the greater Lions/Rotary project), is working.

Terry has lived on the farm at Huarau for 63 years but was raised at Whakapirau.



Terry's father had come from Auckland to help his brothers on their property *Bassenfell*, upriver from Whakapirau. The brothers went off to WWI leaving 18 year old Athole to mind the farm.

Athole later married Ina Snelling from Maungaturoto and they had five children. Visitors loved to go spear fishing on the beach. A treacle tin was cut open and a candle placed inside. The shiny inside of the tin reflected the light perfectly. Sometimes the family rode over to the next bay, caught plenty of fish and delivered them to neighbour's mailboxes on the way home. A phone call next morning alerted the neighbours to their overnight fish delivery.

Bassenfell homestead had no road access and trips away meant boating or walking round the beach to the family car, kept in a shed at Whakapirau. Over 1936-1937 the house was dismantled, sections sledged down to the beach, loaded on a barge, shipped to Whakapirau, loaded back onto sleds, and then re-erected on the other end of the farm at the top of the hill, not far off Whakapirau Road.

To play rugby, Terry rode his bike

(no gears in those days) 7 miles in to Maungaturoto along a narrow, metal road. His preferred mode of transport, though, was his horse which he rode to school (Maungaturoto) several times a week in preference to taking the school bus. The horse was left to graze in the school's horse paddock, now the playing field, for the day and then Terry rode home again.

Riding at the Paparoa Show every year was a 'must do'.

Terry and his friend, Don Ingram, dressed in their showing gear, would ride slowly over to Paparoa on show morning, compete all day, and then ride home again.

Terry remembers feeling bereft when Paparoa Show was not held during WWII. Competing at Waiotira Show was a much more complicated affair. First a railway wagon (an HQ) had to be ordered. When the train arrived at Maungaturoto Station, the horses were led along the platform (human cargo had to stay out of the way), walked up the door of the wagon which had been led down on to the platform, and then into compartments. Two horses in the front and two at the back with a space between for gear. The competitors left on the Friday, stayed at Waiotira and then returned by train on Sunday. Three days was also needed to compete at Waipu Show, riding there via the Waipu Gorge and coming home the day after competition.

It became easier to show and go hunting after Terry built a box (held on by four bolts), for his

father's car trailer. The state of the roads made this mode of transport tricky sometimes. One year, on the way to Waiotira, the car began to skid in the loose metal on Trounson's Hill; luckily the handbrake held and the horse was unloaded and led to the top of the hill; someone else brought up the car and trailer; the horse was reloaded; and a great day was had at Waiotira!



Bassenfell homestead (centre of picture) on the hillside above Whakapirau. Taken from Pahi on Regatta Day 1915.

Marriage to Kathleen and a young family put an end to showing and Terry took up boating and fishing with his family instead.

Thank you Terry for sharing your story. PP

Kevin's Shed
panel beating & repairs

Just ask

027 642 4991

09 431 6444



3245 Paparoa-Oakleigh Rd

REX BROWNE
CONTRACTING

- Limestone & Metal Cartage
- Truck & Digger Hire
- Farm Roads
- Earthwork & Dams
- House Sites & driveways
- Wrapped Silage & Hay
- Cultivation
- Fencing & Mulching



Maize Silage
planting & harvesting

☎ 09 431 7556

☎ 021 720 590

Paparoa Store

Proudly Supporting Paparoa

OPEN 7 DAYS

Monday-Saturday 7am-6pm

Sunday 9am-5pm



We stock a great selection of
CONFECTIONERY, ORGANIC, DELI, MEAT,
FRUIT, VEGES, FROZEN GOODS, BEER, WINE
and a wide range of grocery items at excellent prices

DVD's \$1 to \$8 per night

EFTPOS NZ HERALD POST CENTRE

Phone / Fax 431-7320

Cnr. Franklin Road and State Highway 12

Ruawai Homekills

Full service slaughtering & processing of Beef, Sheep, Pigs, Deer, Goats

All Beef aged

Salami ▲ Bacon ▲ Ham ▲ Sausages
Hamburger Patties

Traditional Manuka wood smoked Bacon, Ham & Salami

Over 25 years experience

For prompt & professional service contact Wayne or Annette

09 439 2020 • 021 401 934

ruawaihomekills@gmail.com
Information packs available

Covering the Kaipara and Whangarei regions

MEAT at the MARKET

Quality bacon, pork, sausages & small goods now available at the Paparoa Farmers' Market every 2nd Saturday, 9am-noon Paparoa Village Green



Long Flat Bacon Company LIMITED

www.longflatbacon.co.nz

A1 Cats Boarding Cattery

Ken & Faye
Subritzky
548 Pahi Rd



Ph 09 431 7477
www.a1cats.co.nz

OUT & ABOUT around the District

Congratulations to Marion Tasker of Pahi who recently celebrated her 90th birthday with a party for family and friends at Pahi Hall. Guests came from Australia and from all over New Zealand to attend.

Otamatea High School will be closed for tuition on Tuesday 4 June for a Professional Development Day for staff.

'Gus' Fergus (formerly of Maungaturoto and one-time owner of Maungaturoto Dairy) died during May. 'Gus' had a connection with Paparoa. His father 'Boy', and uncle 'Doug', ran their business 'Fergus Bros.' (general carriers) from a depot sited in the vicinity of Randall Haines' present-day antiques business. The 'Doug' Ferguses lived in the house now owned by Brian and Rose Plunkett and the 'Boy' Ferguses lived in the house adjacent to Maungaturoto Primary School's bus entrance.

Farewell to Ian and Jan Harper who are leaving the district. Jan has already taken up residence in Whangarei and Ian is following shortly. Jan's son, Ben Ratima, is a vocalist for local band "Soljah". The band has just released

an album which is No.2 in the charts. The video for the album was filmed at Pahi.

Rosie and Don, stall holders at



the Paparoa Farmers' Market won't be running their stall for a few weeks. They are off to Thailand, Rosie's home to have a traditional Thai wedding. What you might call Thai-ing the knot.

The new Principal at Otamatea High School has been announced.



She is Rachel Clothier-Simmonds, who will take up her position at the beginning of Term 3 2013. Rachel is currently at McAuley

High School in south Auckland where she has been Assistant Principal for the past six years.

When you open your next bottle of wine, don't forget to save the foil lid and sleeve on the neck of the bottle. Give them to a member of Paparoa Lions who collect them for fundraising.

New in the Village If you're wondering what's happening in the old butchers shop on the main street - it's having a makeover. New paint, interior fit-out and a brand new business. Unfortunately we can't reveal any more so watch that space. Next door Alistair Taylor is working furiously to get his units ready for new tenants.

Up at the Paparoa Store, Frank Wu has re-laid the concrete to improve the safety of the footpath which has been a long standing issue. It is good to see the confidence and improvements being made by the owners.

The Paparoa Hotel has closed. We understand that the owners will be refurbishing in coming weeks with a view to re-opening under new management. PP

g.a.s. Paparoa



- Petrol, Diesel & Oil
- LOWEST priced milk
- Great variety of Bait



Local tides for June 2013

| JUNE TIDES - CALCULATED for PAHI-WHAKAPIRAU | | | | | |
|---|---------|---------|------|---------|---------|
| DATE | LOW | HIGH | DATE | LOW | HIGH |
| 1st | 10.48am | 5.19pm | 17th | 10.46am | 5.11pm |
| 2nd | 11.49am | 6.23pm | 18th | 11.43am | 6.12pm |
| 3rd | 12.50pm | 7.27pm | 19th | 12.43pm | 7.15pm |
| 4th | 1.48pm | 7.46am | 20th | 1.44pm | 8.18pm |
| 5th | 2.40pm | 8.39am | 21st | 2.44pm | 8.40am |
| 6th | 3.27pm | 9.26am | 22nd | 3.41pm | 9.39am |
| 7th | 4.09pm | 10.09am | 23rd | 4.35pm | 10.35am |
| 8th | 4.48pm | 10.49am | 24th | 5.37pm | 11.30am |
| 9th | 5.25pm | 11.27am | 25th | 6.27pm | 12.23pm |
| 10th | 6.01pm | 12.05pm | 26th | 7.06pm | 1.15pm |
| 11th | 6.36pm | 1.02pm | 27th | 7.56pm | 1.46pm |
| 12th | 7.12pm | 1.20pm | 28th | 8.29am | 2.57pm |
| 13th | 7.50pm | 1.59pm | 29th | 9.21am | 3.49pm |
| 14th | 8.22am | 2.40pm | 30th | 10.14am | 4.44pm |
| 15th | 9.05am | 3.25pm | | | |
| 16th | 9.53am | 4.15pm | | | |

John & Nicki Eddy
09 431-6302

WINTER HOURS 1ST MAY - 1ST OCT:
Mon-Fri 6.30am-6.30pm
Sat 7am-6pm; Sun 7.30am-5.30pm



Motoring Musings ...

I have to get something off my chest, the state of the seal on the roads of Northland. For many years we have had to put up with the roar within our vehicles caused by the coarse metal used to seal the roads. Now, the situation is getting worse. Have you noticed how coarse the chip is at the top and bottom of Ariell Hill and many places on SH 12 towards Dargaville? The road noise is almost painful to the ear, why can't the contractors use a smaller chip as they have beside the airfield and on the last two kilometres in to Maungaturoto?

There, I feel better now, but, I am sure I will find more complaints to air in future articles. To be fair to the authorities, trying to keep the roads well maintained in this area is almost mission impossible, if we get a wet winter the roads slip away, and if we get a prolonged dry summer they do the same.

It is good to see the progress with the new smooth seal in Maungaturoto, not before time. That surface should last many years, it is very expensive but will reduce wear and tear on vehicles as well as the road itself.

Property Report

Paparoa Press asked Jill Wilson, Manager of First National Real Estate for a report on the local property scene.

Jill responded that the property market is certainly hotting up with a significant rise in residential and lifestyle sales within the greater Kaipara area. Sales have definitely increased in recent months.

In the Paparoa and Maungaturoto areas there are a number of properties that are reasonably priced and banks seem keen to lend. Paparoa Press will be asking the other agents in the district for their comments in coming months. PP

Pets in the Valley



Don't you love it when you've got visitors and the dog (or cat) decides to 'scoot' across the carpet on their backside as if to say you're out of toilet paper. There are three main reasons why our dear friends do this.

#1 Tape worm segments causing an itchy anus. Easy to deal with - use a worm pill but make sure it does do tapeworm. The spot on flea treatments that also do worms DON'T do tape worm but if kitty is impossible to worm there is a spot on product that does do all worms (but not fleas).



#2 Anal glands full. A very common cause of scooting especially in dogs, occasionally in cats. Doctors don't know how lucky they are that humans don't have these glands! Emptying them is a smelly and sometimes painful experience! Five years of tertiary education means you can don a glove grab some lube and express these delightful sacs. I always do them last thing in a consult so everyone can leave quickly afterwards.

#3 Itchy skin around the perineum region or vulva. Some overweight animals, especially of shorter leg models, have folds of skin around their derriere that can get moist dermatitis which gets very itchy. Some female animals have what is known as a "duck beak" vulva which is folded in the middle and also can get very itchy. Weight loss for the first ones and designer surgery for the second!

Easy - no more embarrassing moments!

Janine Hames

Privet Posse on Pause

Autumn has seen the Lions Club focus switch to our firewood project as the phones have been running hot for that special delivery. This has meant the Privet Posse has pushed the pause button.

The privet on the northern side of SH 12 just before Stirling Road, as one heads west, is succumbing to the potion that has been applied.



dying Privet

We have a few "lone rangers" who use the "little and often" approach to privet control whilst travelling to and from work, maximizing their "time and motion" capabilities.

In response to the expression of interest with regard to assisting our Posse, Melissa from Matakoke made contact last month and we look forward to working with her soon.

Lance Keay Contracting Ltd

- Effluent Pond Cleaning
- Single Pass Tillage & Seeding
- Cultivation
- Fertiliser Spreading
- Hay & Silage Mowing
- 6 Ton Trailer

Taipuha RD1, Paparoa, 0571
09 431 6308 021 383 908
lance.k@extra.co.nz

katzkutz
quality haircuts and more!
with fair prices!

Also: foils, tints,
semi-permanents, crazy colours,
permanent waving, blow waves

Open Mon-Fri 9am to 5pm
(8pm Tuesdays)
**Call in or phone Katrina
on 09 431 9120**
Next to Well Kneaded Massage
Maungaturoto

Fromage at Franklin introduces

Hands on Cheese Making

Come and join a small class (no more than 4) in a tranquil, rural setting, and get your hands into cheese-creation!

In our custom-built boutique cheese room we will concentrate on making one type of cheese to begin, and then finish with a batch of fresh butter, and you get to take all your hard work home.

Cheese Courses will be 4-5 hours maximum. You will start at 10.30am with fresh brewed coffee and an introduction to the cheese making process. Then it's aprons on and you will make cheese from start to finish.

CONTACT JAS FOR DATES AND FURTHER INFORMATION
(for small groups of 2-3 or 4 we can do dates to suit)



FOR FULL DETAILS: contact Jas on **022 678 1474**, jasfutter@clear.net.nz and check out *Fromage at Franklin* on Facebook

Turning Milk into Cheese its Magic

Hankies fabrics handbags frames
hosiery scarves curtain hooks
dmc cotton WOOL PATTERNS
ORNAMENTS
crochet cotton POSSUM WEAR
needles gumboots
rugby socks LACE workwear

Paparoa Drapery

09 431 7306

umbrellas otamatea high uniform towels
hair accessories baby wear mats bed sheets
fashion clothing Jewellery
Toys knitting needles
HABERDASHERY swimwear sun hats
curtain tape shoes TEATOWELS BOOT LACES
WALLETS

8.30-5 Mon-Fri, 9-12 Sat

Country Cutz

Gay Northcott
The Salon - Paparoa Village



Fully qualified
and professional
friendly service

- Ladies & Mens Cuts
- Perms, Colours
& Highlights
- Weddings

Open Thurs-Fri
Wed & Sat by appt

After hours phone Gay 431 7007
Salon 431 7255

PAPAROA SPORT

PAPAROA BADMINTON

Every Thursday evening at 5.30pm a large group of children from 7 years to 17 years from Paparoa and surrounding districts gather at the Paparoa Hall to play badminton. Currently run by Pete Hames and a few helpers they are learning skills, improving their fitness and having fun. The noise level has reduced significantly thanks to the acoustic panels that were installed last year and makes it a fun place to be. Following on from the juniors is an adult session from 7pm. More adult players are welcome and a range of abilities is catered for.

TABLE TENNIS

If badminton is not your sport then on Tuesday evening from 7.30pm is table tennis. This is run in the Paparoa Sports Pavilion, again with a wide range of abilities and ages. We play singles and doubles which gives everyone a chance for success! Even if you haven't played for many years or never played come along and give it a go. We are lucky in Paparoa to have the Paparoa Hall and the sports pavilion to be able to run these and other sports so come along and support their use.

Tuesday evening **TABLE TENNIS**
doubles players:

Shion Cairns and Simon Kjellberg



LANDSCAPE SUPPLIES



Powell Contracting Ltd

OPEN:
Weekdays
8am to 5pm
Saturday
8am to noon

Diggers and Trucks for all your
Earthwork & Cartage requirements

Now Stocking

Daltons & Watkins:

- Potting Mix
- Compost
- Bagged Shell
- Pebble and Scoria
- Bark & Fertiliser



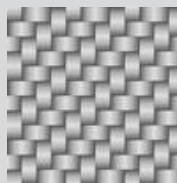
We Also Stock

- | | |
|---------------|-----------------------------|
| Bulk Compost | Timber |
| Topsoil | Posts |
| Sand | Battens |
| Riverstones | All grades of metal Nails & |
| Lime Chip | Staples |
| Blue Chip | Pro-max water tanks |
| Bark | Aqua water tanks |
| Post Peelings | Drain coil |
| Woodchip | Culverts |
| Builders Mix | Hurricane Gates |
| Cement | Full range of |
| Easi-crete | StrainRite fencing supplies |



Powell Contracting Ltd, 2088 Paparoa Valley Road, Paparoa
Ph/Fax 09 4316 331

art ... Crafternoons



"Crafternoons" is the catchy name for the busy group that meets twice each month at Tinopai Hall. When I visited, I was amazed at the wide range of interesting craft and art activities that were being done there. I saw needlework, printing and painting, knitting and flax weaving, people making dolls, photo albums, rugs. This new group started in March, but already has

built a following, and is providing a focus for new arrivals to join and meet those with longer established links in the community.

People bring along their own projects and mostly work independently, informally sharing skills and helping each other with information and troubleshooting. The plan is to have demonstrations from time to time giving the opportunity to learn new crafts; after an introduction to flax weaving, a number of people put aside their work in progress to attempt this new skill.

I am always fascinated by the different tools and materials that are needed for making things, and found plenty to admire in Tinopai. I saw beautiful coloured ink sticks, grinding plates and brushes for Chinese and Japanese brush painting; detailed patterns for applique, embroidery and knitting, along with brilliantly coloured silks, felts, and wool; paint and fabric, flax and photographs.

In our small communities, groups like this have significant social benefits, providing an opportunity for people to get together and meet others with shared interests while engaging in productive activities.

Everyone is welcome to join the crafternooners: first and third Wednesdays, 1-4pm at Tinopai Hall. Contact: Gay 09 929 9778, Val 09 431 6929, or Lyn 09 431 6090.

Helen Budd

Coeliac Awareness Week 26 May – 1 June



It could be coeliac disease!

- Coeliac disease is a reaction to gluten and common symptoms can include a lack of energy, digestive and bowel problems, nutritional deficiencies and a general feeling of being unwell.
- 1 in 100 New Zealanders are affected yet 4 out of 5 of these don't know they have the condition. It is simple to detect and easy to manage.
- If you think you might have coeliac disease, see your GP for an easy test.

Proudly supported by

Healthieries Simple
Wheat and Gluten free



Learn more at coeliac.org.nz – Helpline 09 820 5157



Paparoa Primary School



The children at Paparoa Primary School have been very busy making the entrance way to their school look amazing. The first step in this transformation is mosaicking their sign. All the children helped put the tiles onto the letters of the school name and then helped with the grouting and shining.

I'm sure you will agree it looks amazing. The school would like to thank Tile Depot for their discounted tiles and grout and their extremely helpful and friendly service.

The Old Oak Tree - heading for a fall?

Paparoa Primary School is looking at possibly cutting down the oak tree that is situated beside the astro-turf at the school. The tree, although beautiful, is causing the school many problems. The leaves that fall off the tree are blocking up the drainage and spouting. They cause a large mess in the swimming pool and the acorns are sore on the children's feet. The shade from the tree is also causing the astro-turf to get mouldy and slimy and makes it unsafe in the winter time for the children to play there as it is very slippery.

Talking to the arborist he has also mentioned that many of the limbs are unsafe as they are starting to rot. The school would like to look at removing the tree and mill some of the wood for later use. This way the heritage of the tree is preserved in the school. They would look at planting another tree on the grounds, near the fence to replace this one. Principal, Mrs Kim Tavinor said, "I know this seems like a shame, but for the safety of our children we feel that this is the best option for the tree."

The school is looking at a long term plan of erecting a shaded area to cover the sandpit and go out over the grass area so that students can get out of the sun in the summer months. If anyone has any questions, queries or concerns about this, please contact the school office on 09 431 7379.

PTA EASTER RAFFLE

The school's PTA Easter Raffle was well supported by local businesses and families. The PTA would like to say a huge thank you to everyone who donated prizes and who bought tickets.

The main prize was won by the Lydiard families Grandparents Estelle & Bruce; 2nd place went to Jordan Smith (Mrs Cadman's son). Prizes were also given out for top sales people, and PJ Powell won this by selling 94 tickets. Miss Rogers came second selling 90 tickets, and Katrina Poyner came third selling 64 tickets. Well done everyone!

FENCING CONTRACTOR

For all types of fencing, stockyards, handyman work, tree felling, tractor work etc.



phone

**Mike 09 431 6509
027 203 2694**

email

mandsplunkett@slingshot.co.nz

FARMWORK SERVICES LTD

Paparoa Farmers Market

"The friendly market"

Wide selection of local goods



Fortnightly **SATURDAYS**
9am-noon at the Village Green
**June 1st, 15th & 29th
July 13th, 27th**

ph Mary 431 7123 or Graham 431 7209

Teachers have class

The roll keeps rolling up!

The school welcomes newcomers ...

the Peele family:

Mum Nicole,

and boys

Cullen and Shayden



Crompton Engineering Ltd

Phone/fax 09 439 2393
31 Jellicoe Road, Ruawai



Hay Racks
- covered
or uncovered

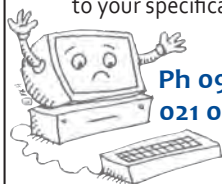
Palm Kernel Trailers



website: cromptonengineering.co.nz
email: crompton.eng@xtra.co.nz

R & D MACDONALD COMPUTERS

Call Ross with your
computer problems & repairs
He'll even build a computer
to your specifications



Ph 09 431 6221
021 0248 4485

email: ross@paradisebreeders.co.nz

Wendy Sheppard
Ryan Sheppard

catering for all occasions
from finger-foods to buffets

CaterKing
catering for all occasions
from finger-foods to buffets

Ph: 09 431 7301
Mob: 021 458 804
caterkingcaterers@hotmail.co.nz

CALL US FOR A FREE QUOTE

KAIPARA LIFE - Fruit Mystery Solved

Every year around this time a mysterious fruit appears on the shores of the Kaipara. Looking like alien brains these large, bumpy, yellowish-green balls have kept both their source and their identity secret until this year when both mysteries were solved.

Firstly take a trip back to pre-European America - to the small pocket of land on the great prairies that was home to the buffalo hunting Osage Indians.

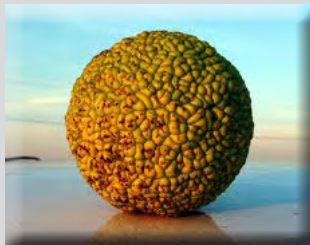
Now these guys survival depended on having bows of the highest quality and the wood that made the very best came from the very same species of tree that centuries later were sending their strange seeds across the Kaipara. So valued were the bows that a brave would need to trade a horse and a blanket for one.

Later the newly arrived settlers also valued this tree which they called the Hedge Apple. They used them to grow 'horse high, bull strong and hog tight' hedges for their farms and their strange fruit to rid their homesteads of insects.

They also discovered that Hedge

Apple timber was fantastic for both furniture making and fence posts.

So now I had a name and a history for these strange fruit but was no



closer to finding out where they were coming from until we took the grandchildren on a school holiday jaunt to a little beach behind Pahi and there they were - two aged

Hedge Apple trees growing on the shoreline boundary of a very old orchard. Given their many uses it is not surprising that some enterprising settler decided that they would be a useful addition to Kaipara pioneering life.

And now those days are long gone but these intriguing trees, having survived untold changes to life and landscape, continue every autumn to cast their strange fruit into Kaipara's waiting waters.

Christine Yardley

PAPAROA LIBRARY BOOK REVIEW - JUNE

Author: Nora Roberts

As of 2011, her novels had spent a combined 861 weeks on the New York Times Bestseller List, including 176 weeks in the number-one spot.

Title: Inn Boonsboro Trilogy

The Montgomery brothers, all single, are restoring an old Inn in a small town in America.

The 200 year old Inn Boonsboro has an interesting history, and a previous life during the Civil War has left the Inn with a ghostly inhabitant.

The three books in the trilogy cover the restoration of the Inn and the matchmaking by the 'ghost', whom Beckett Montgomery names Lizzy. Beckett is researching the history of the Inn to try and discover who the ghost was.

These books are typical Nora Roberts and are a nice easy read with happy endings, which is gratifying sometimes in this ever increasingly violent world. Also a bit of a history lesson about the American Civil War.

Reviewer: Sue Taylor

PAPAROA HOTEL TO RE-OPEN SOON ...

Paparoa Hotel is to take on a fresh and vibrant life. The hotel has been owned by David and Joan Goode since 1971 and since 1978 they have had Lessees managing it. Now, daughter Pam, who went to Paparoa Primary and Otamatea High Schools at that time, holds the reins and has a Consultant helping her with plans for it to open mid-June under new management.

Included will be a refurbished dining room with strong emphasis on offering quality but good value meals using local produce, and for the hotel to become the heart of the community.

Pam wants it known that the Annual Pighunting weekend will be delayed until late July but will definitely happen!

Pam can be contacted on 0274 378 746.

Community Connexions - Arty Farties Inc.

Members of Arty Farties Inc. Committee supported the children's Day Camp over the school holidays - painted pots with plants were the order of the day and with Carters donating the paint a lot of fun was had by all.

Arts and Crafts Markets at Maungaturoto and Paparoa are doing well. We are looking for knick-knacks or anything that can be recycled that can be used to raise money for the food banks.

The community garden is growing well, thanks to a lot of TLC and the rain that we've had recently.

Thank you for the pumpkins left on the roadside stall. Pumpkin soup on the menu?

A young family in our community at Paparoa is growing their own veggie garden and learning as they go. Good on you guys for looking after your own veggie plot in the community garden and for setting a great example that perhaps others will follow.

Cheers, Anne

**Tyres for
every budget.**
Call in and see Dean and
Reece for special pricing.



*Offer applies to cash, EFTPOS and credit card sales only. Offer excludes finance, charge cards and account customers. Maximum qualifying spend \$500. See AAsmartfuel.co.nz for full terms and conditions.

**Specialising in tyres for all vehicles
wheel alignment • WOF • batteries**

Garnetts Tyre Service

2 Gorge Rd, Maungaturoto. Ph 09 431 8255.

BRIDGESTONE TYRE CENTRE

WHAT'S ON - JUNE 2013

- Ararua Church** 10.30am every Sunday, All welcome ph 431 6622
- Art Group Paparoa** 1st Sun in month, Helen Budd's Studio, ph 431 6192
- Art Studio, Ruawai** Mon 10-12noon; Tues 7-9pm ph Frances 439 2554
- Arty Farties** • Summer Markets 9am-noon, opposite Village Green
 • Thur/Fri in the 'Tile Shed' ph Anne on 431 6229 to enquire
 • Crafty Kids Club alt Saturdays 10-2pm, Rm 5 Paparoa Primary School
 • Beginners Patchwork Group, Mon 7pm, Congregational Hall, M'gto
- Badminton** Thurs, years 5-11 5.30pm; older/experienced 7pm, Paparoa Hall
- Bahai Faith** Enhancing community-building Wed 12.30 or 7.30 ph 431 8488
- Crafternoons** 1st & 3rd Wed in month, 1-4pm, Tinopai Hall ph Gay 09 929 9778
- Exercise to Music** Tue 10.30am Paparoa Hall \$5 ph Rose 431 7418
- Farmers' Market** Fortnightly Sat 9-noon, Village Green Jun 1, 15, 29 Jly 13, 27
- Fire Force** 1st & 3rd Monday in month 6.30pm Depot Rd ph Cohan 431 6668
- Gardening Club** 2nd Wed of month, ph Sharon 431 7159
- Grey Power** Last Wed in month, 2pm, Hall next to Resthome, M'gto
- Indoor Bowls** Wed 2pm, Paparoa Hall ph Loraine 431 7290 or Robyn 431 7306
- Library** Mon 1.30-4.30pm, Wed 10am-12noon, Fri 9.30am-1pm
 open all Market days - alternate Saturdays 9.30-1pm
- Line Dancing** Recommences soon ph Rose 431 7418
- Mainly Music** Wed 9.30am Paparoa Comm Church, ph Rebecca 431 7550
- Music Makers** 2nd Tues of month 7.30pm @ Cruiser Bar & Grill
- Paparoa Community Church** 10.30am every Sunday, Hook Road
 Weekly Hearty Soup-er Fridays (until Aug) 6pm, everyone welcome
- Paparoa Lions Dinner Meetings** 3rd Mon in month 6.30pm, Paparoa Hall
- Paparoa Playcentre** Tue & Fri 9.30-12noon, Visitors welcome ph Renee 431 6336
- Paparoa Plunket Society Coffee Group** First Tue/month, 10am Franklin Rd
- Paparoa School** Term 1: 29 Jan - 19 Apr; Term 2: 6 May - 12 Jly;
 Term 3: 29 Jly - 27 Sep; Term 4: 14 Oct - 13 Dec
- Paparoa St Marks Anglican Church** 2nd & 4th Sundays, 10am, Hook Rd
- Paparoa Toy Library** Wed 10.30-1pm, Paparoa Comm Church, Hilery 431 7330
- Sports Pavilion** Functions venue, ph Vickie Owens 431 6432 for bookings
- St Mary's Catholic Church** 10am Wed, 6pm Sat, Maungaturoto
- Tai Chi** Tues 1pm, Paparoa Hall, ph Shirley 431 6408
- Table Tennis** Tues 7.30pm, Sports Pavilion \$2 Pete 431 6822
- Tennis** Fri 10am Social; 1st & 3rd Sun 1pm; Courts open for casual play - \$2/pp
- Ukelele Players** Beginners / experts, Thu 5.15pm Matakoho, ph Dennise 431 7012
- Waka Ama** Tues & Thur evenings 5pm, Sunday 10am, Pahi Domain
- Wearable Arts Gala** 🌿 Saturday 24th August 2013 www.paparoa.org.nz/wag
- Yoga for Body & Mind** Tues & Thurs 4.15-5.45, M'gto ph Gabriele 431 2099

PLEASE UPDATE US WITH YOUR DETAILS: paparoapress@orcon.net.nz PP

Place your Ad here

reaching your community for only \$25/month

all proceeds from advertising go toward community projects

contact Paparoa Press

09 431 7144 a/h

paparoapress@orcon.net.nz

CAR REPAIRS

Cam's Autos



For all mechanical repairs and warrants of fitness. We service cars, 4WDs, trailers & utes.

Paparoa Valley Road
Ph 09 431 6620

You won't go away hungry!

THE CRUISER BAR and GRILL

- Wholesome, affordable meals
- Fully licensed
- Family friendly
- Inside-outside dining
- Private functions

In the village,
Paparoa Valley Road



OPEN WEDNESDAY to SUNDAY, 5pm 'TIL LATE

ph 09 431 6918

Community Directory

EMERGENCY: FIRE ■ POLICE ■ AMBULANCE dial 111

COAST TO COAST HEALTH CARE

Maungaturoto Medical Centre 8am-5pm Mon-Fri 09 431 8576
 Paparoa Clinic: Doctor Tuesday 8.30am-12.30pm 09 431 7222
 Nurse-only Friday 8.30am-12.30pm 09 431 7222
 For urgent after hours medical service (Wellsford)..... 09 423 8086

DISTRICT NURSE Dargaville Hospital 09 439 3330
 Healthline - 24 hour service..... 0800 611 116

HOSPICE KAIPARA Dargaville Hospital 09 439 3330

KAIPARA DISTRICT COUNCIL Helpline 0800 727 059
 Kaiwaka Office 0800 100 388

LINKING HANDS Health Shuttle Service, Maungaturoto 09 431 8969

MAUNGATUROTO PHARMACY 09 431 8045

MAUNGATUROTO REST HOME 09 431 8696

OTAMATEA COMMUNITY SERVICES Community House 09 431 9080

PAPAROA LIBRARY Membership free-of-charge, Wheelchair access
 Mon 1.30-4.30pm, Wed 10am-12noon, Fri 9.30am-1pm
 open all Market days - alternate Saturdays 9.30-1pm

PAPAROA PLAYCENTRE Vanessa 09 431 6731
 Renee 09 431 6336

PAPAROA PLUNKET Cynthia Keay 09 431 8187
PLUNKET Helpline 0800 933 922

PAPAROA PRIMARY SCHOOL 09 431 7379

PARENT PORT Inc. free help for families Linda 09 425 9357

PHYSIOTHERAPY Lyndsay Bargh Mon/Wed/Fri from 8am...431 8576

PUKE ARANGA TE KOHANGA REO 09 431 7089

YOUTH & WHANAU FOCUS South Kaipara, Rose 09 431 7418

REMEMBER!

MG Boarding Kennels

MATAKOHE



PHONE 09-431 7368

Fun holidays for your pets

▶
▶
▶

Your
pets
need a
holiday
too

"No job too small"

Ross Latto

**LICENSED
BUILDER**

.....

House construction, alterations,
renovations, general repairs

Ph 09 431 7442 021 772 766

PO Box 17, Paparoa



Wanted : Editor

Progressive Paparoa Inc
is seeking expressions of
interest for the position of
Editor of Paparoa Press.

If you are interested (or
know someone who might be)
please contact:

Paparoa Press,
PO Box 107, Paparoa
or email grnt@xtra.co.nz

HOOK, LINE & SINKER

Gravy reports that snapper seem to have moved off from the usual fishing spots, so try fishing in different places to your usual. There are still plenty of kahawai about and gurnard numbers are increasing. The best fishing story that Gravy has heard recently is the 10-pound snapper caught off Pahi Wharf. You never know where you'll catch a great fish!

You never know where you will see one either. Fishing off Hukatere Islands on a flat calm, sunny day the Gravy Boat was visited by a pod of at least 12 Orca of all shapes and sizes. The variance in fin shapes of the adults amazed the fishing party and a group of young Orca played close by. There were reports of a lot more Orca further down the harbour off Tapora and Whale Watch researchers from Whangarei had been alerted and were on the way to catch up with them. What a day on the Kaipara!

As we go to press, Gravy's having surgery on his achilles tendon and so will be confined to wharf-only fishing until he gets out of plaster.



The intrepid Gravy (Gary Greaves) pictured with catch when fishing off the Pahi wharf.



Orca Rescue

Orca Research Trust personnel keep watch until Koru the orca re-floats after his 4-hour stranding on Kaipara's Five Fathom Bank.

Photo courtesy of:
Ingrid Visser of the
Orca Research Trust.

For more info go to

www.orcaresearch.org If you see orca the Trust would really appreciate a call: 08000 SEE ORCA (0800 733 6722)

Making the most of the Indian Summer

Spotted recently enjoying the last rays of summer at the Village Green, Maria Friis and Christian Glerup from Denmark, thought Paparoa a perfect place for a quiet read. They were nearing the end of a five month holiday in NZ, taken as a gap year before commencing university. Both plan to become doctors. Perhaps we'll see them back in Paparoa once they graduate?



Maria Friis & Christian Glerup from Denmark

Ross Murphy Plumber

CERTIFYING
PLUMBER

NEW HOUSING
RENOVATIONS
MAINTENANCE

09 431 7510
021 424 252



Birt & Currie Surveyors Ltd



Local Phone
09 280-9591

**Timely,
friendly &
personal
service**

info@landsurveyors.co.nz
www.landsurveyors.co.nz
PO Box 120 Paparoa 0543



Held every 2nd Sunday of the month
Sunday 9 June
Sunday 14 July

A variety of new & pre-loved goods

Enquiries: markets@slingshot.co.nz
Mandy 09 431 8717

5 Questions ... for Graham Marks

Graham lives in School House Lane from where he operates as a homeopath and is often seen walking to the village. PP put five questions to Graham:

How long have you been in Paparoa? 10 years.

Where did you come from? Coalmine Bay, Whangaparaoa, near the Peter Snell Youth Village.

Why did you choose to come to Paparoa? I was looking for a change, had hunted far and wide, and thought the vista from the Brynderwyn turnoff looked inviting. Coincidentally my mother's family lived for some time at 'Faskin House' in Matakohē.

What were you doing before you came to Paparoa? Alongside practising homeopathy, I had worked for fifteen years as a dry stock farm manager for the German owner of a farm at Whangaparaoa. It happened that I had spent time in Germany so we shared mutual interests.

What are you doing now? I work as a homoeopath from home, and do casual work in the area. I am involved with the Paparoa Fire Force as a fireman and treasurer. I recently became president of Tai Chi, and also do the Lions Bush Walkway maintenance. That seems to keep me busy. PP

